

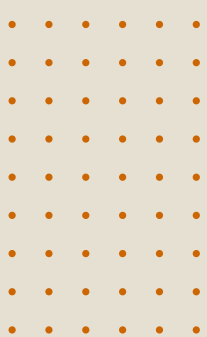


ITECH DATA CENTRES IN HONG KONG

Deliver unparalleled value to our customers

ITECH 1 | ITECH 2 | ITECH 3

ITECH Data Centre
Towers



OUR DATA CENTRES

ITECH 1 | ITECH 2 | ITECH 3

Leveraging the strength of our parent company in building construction, we build, own and operate our high-tier data centres located at prime industrial areas in Hong Kong, allow fast access to CBD which is ideal to support business operation and disaster recovery purpose.

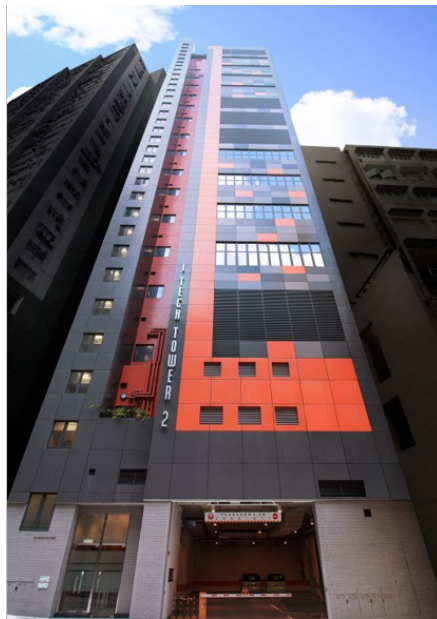
iTech Tower 1, operated since 2008, was converted from an industrial building in Tsuen Wan. **iTech Tower 2** in Kwai Chung was designed to be a Tier-IV-ready data centre, this greenfield development began from the land acquisition in 2012.

iTech Tower 3 (Phase I & II) are currently under construction, with total area of 185,000 sf, will be ready from 2025. This expansion will enable us to meet your growing demand in the territory. We serve different kind of clients including cloud service operators, telecommunication companies and financial institutions.



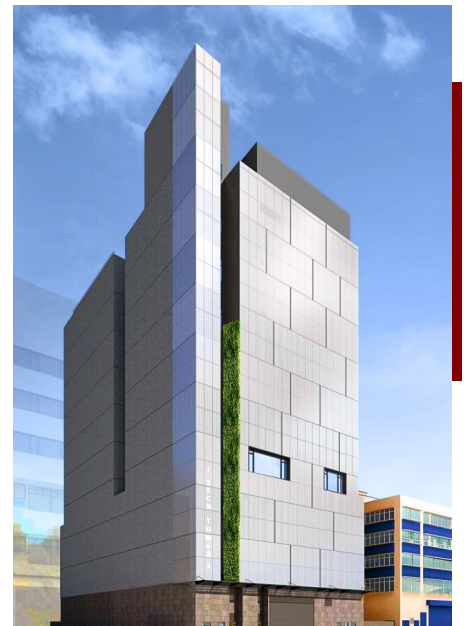
iTech 1

28 Pak Tin Par Street,
Tsuen Wan,
New Territories, Hong Kong



iTech 2

54-56 Ta Chuen Ping Street,
Kwai Chung,
New Territories, Hong Kong

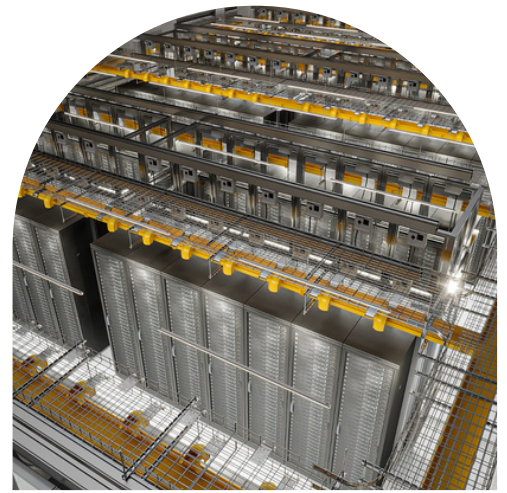


iTech 3

[Phase I] 3 On Kui Street, Fanling
[Phase II] 8 On Chuen Street, Fanling,
New Territories, Hong Kong

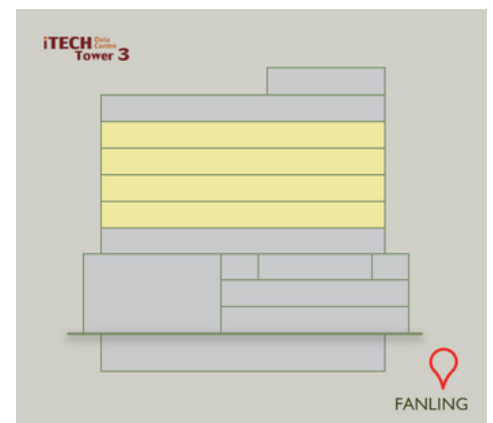
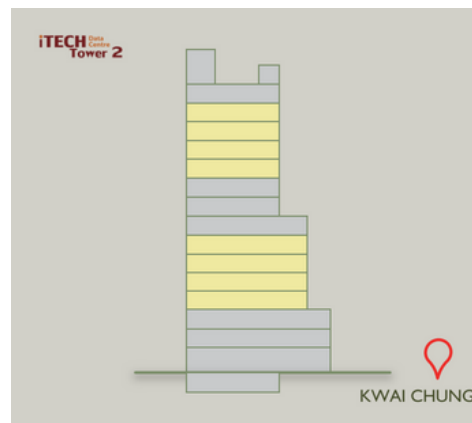
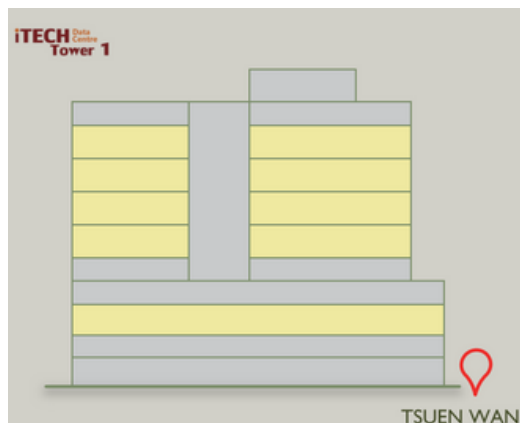
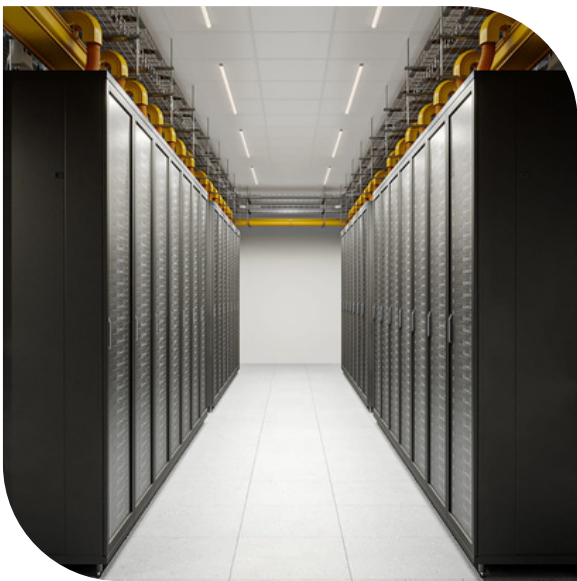
OUR OFFERINGS

- Entire floor data centre space with critical facilities power & cooling, BMS & Access Control
- Private Suite or cage space with scalable provision for your future business growth
- Metered power & online BMS interface to provide visibility into your infrastructure performance
- 24 x 365 operation support with security control from building perimeters



TYPICAL INFRASTRUCTURE

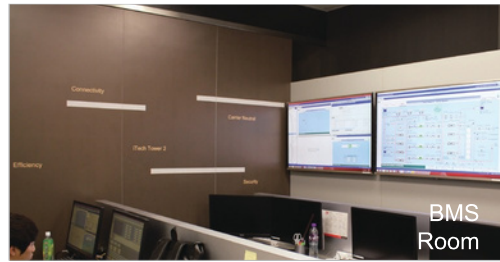
- Building Parameters: slab-to-slab >5m, floor loading of 12kPa
- Utility Power: CLP dual 11kV feeder
- Essential Power: 11kV / 380V Transformer with onsite Genset
- Critical Power: 2N UPS with 10 minutes battery backup
- Cooling Provision: 2N or N+1 chillers & environmental control by CRACs
- Path: dual risers for each of power, chilled water and telecom cables
- Fire Suppression: FM200 gas and / or pre-action sprinkler system
- Onsite fuel storage to support 24 hours continuous operation
- BMS to monitor all critical facilities



iTECH Data Centre
Tower 1

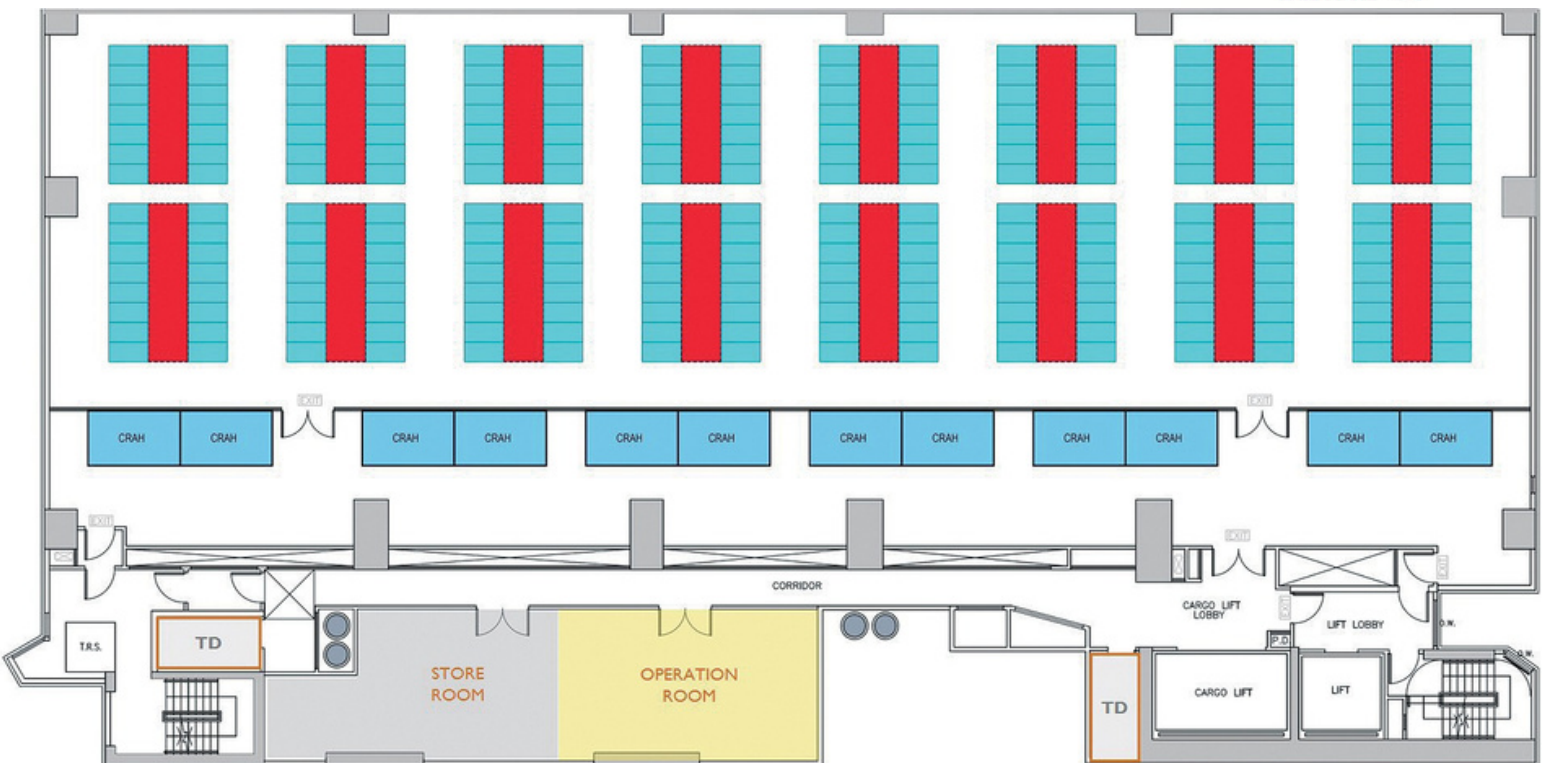


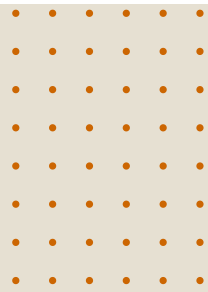
iTECH Data Centre
Tower 2



iTECH Data Centre
Tower 3

Preliminary Data Centre Layout





ABOUT US

iTech Towers Data Centre Service Limited is a wholly owned subsidiary of **Grand Ming Group** (SEHK: 1271). Our parent company has nearly 30 years of experience in building constructions, including building design, A&A works and building service engineering works, is one of the most reliable and reputable building construction company in Hong Kong since 1995. The group has established trustful relationships with renowned private property developers and has completed numbers of prestige and luxurious development projects.

iTech Towers has more than 15 years of experience in providing data centre services and solutions in Hong Kong, offering world-class services & facilities to cloud operators, telecommunication companies and financial institutions.



www.itechtower.com



info@itechtower.com



[linkedin.com/company/itechtowers](https://www.linkedin.com/company/itechtowers)

22/F, Railway Plaza, 39 Chatham Road South,
Tsim Sha Tsui, Kowloon, Hong Kong

